

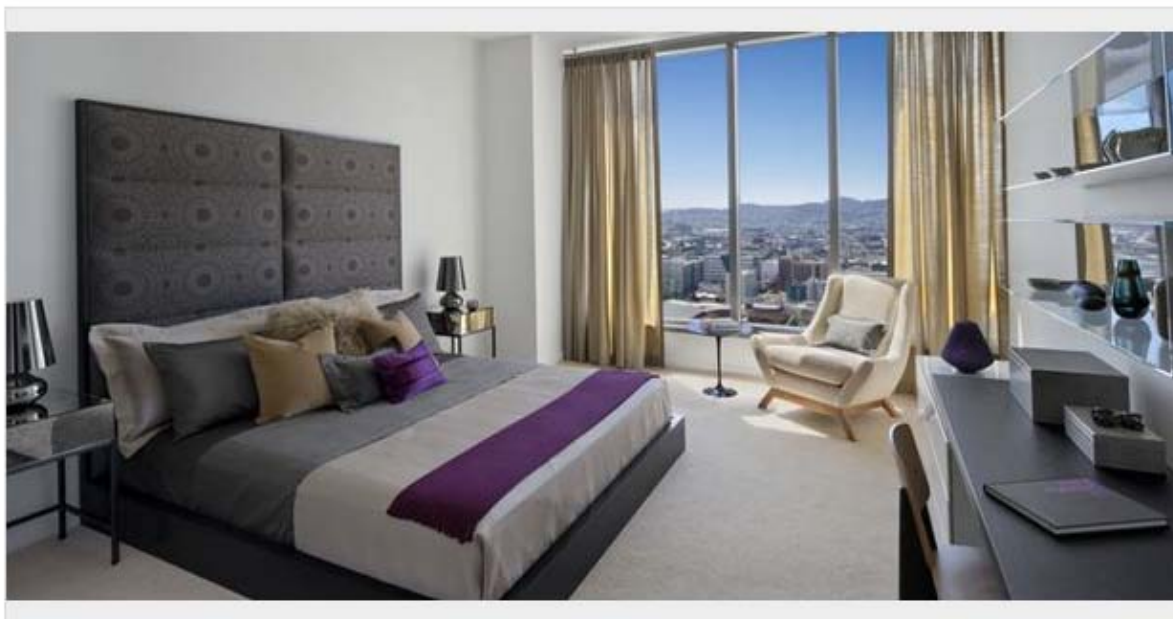


September 27, 2012

KTVU Dream Home: New SF penthouses on the market

◀ 1 of 17 ▶

New SF Penthouses



KTVU got a sneak peek at One Hawthorne in San Francisco and their Penthouse Collection of luxury condos that go on sale to the public beginning September 29th.



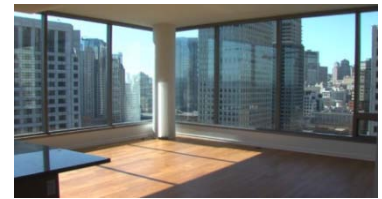
Penthouse homes are priced starting in the mid-\$1.6M and home types include luxuriously appointed two- and three-bedrooms, many with separate dens and powder rooms.



All penthouses are located on the top floors with sweeping views of downtown San Francisco and the bay, and in select homes a private outdoor balcony overlooks the SFMOMA sculpture garden.



Penthouse floor plans range in size from 1,560 to 1,995 square feet. All homes feature luxurious upgraded finishes and amenities, including professional grade stainless steel Thermador appliances, an oversized soaking tub in the master bath and large walk-in closets.



<http://www.ktvu.com/gallery/entertainment/ktvu-dream-home-new-sf-penthouses-market/g5S3/#2719324>